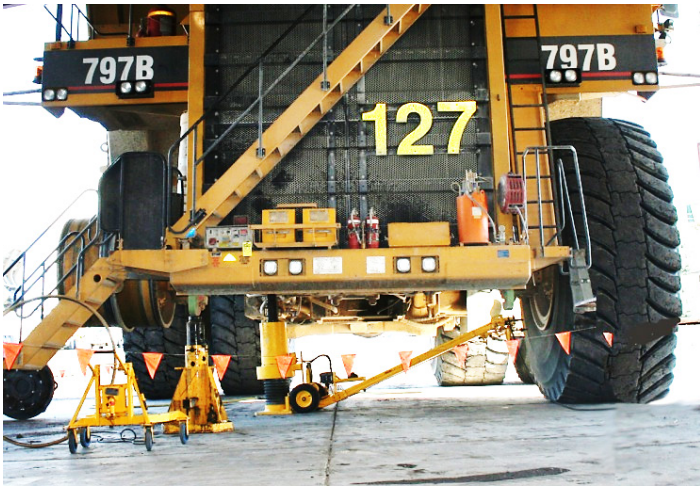


Description



The EDMO AS2 Adjustable Support Stands are designed for supporting vehicles during maintenance and repairs. Height adjustments are made by manually lifting the ram to the required height and inserting the locking pin, to hold the ram in place.

Specifications

Working Load Limit:	20,000kgs
Closed height with load cap:	450mm
Raised height with load cap:	675mm
Maximum operating height:	675mm

Lead time: 12 weeks from receipt of deposit

Supplied with Concave Load Cap.

ACCESSORIES

EDMO STC - Jack Stand Carrier

For movement of stands around the workplace and positioning them under vehicles. The Stand Carrier provides greatest manoeuvrability. The stand carrier has a hand pumped jack which raises or lowers the carriers spigot to align with the socket on the stand. When engaged the jack is pumped to lift the stand off the ground. The carrier can then be manoeuvred to carry the stand to where it is required. To lower the stand the jack is released and the stand carrier can be removed. The stand carrier has swivel wheels for manoeuvrability which can be braked to prevent rolling away.

Suitable for all EDMO Jack Stand models.

Lead Time: 12 weeks from receipt of deposit

EDMO JST - Jack Stand Transporter

For the movement of stands around the workplace, and for positioning stands under vehicles from a greater distance.

The Transporter has a spigot which fits into the socket on the EDMO Jack Stand. By pushing down on the end of the handle, the stand will be picked up, enabling movement. To release the stand, the handle of the Transporter is lifted and pulled away from the stand to disengage from the spigot.

Suitable for all EDMO Jack Stand models.

Net Weight: 80kgs each
Width: 800mm
Length: 3140mm
Height: 750mm

Lead Time: 12 weeks from receipt of deposit

EDMO JSTF - Jack Stand Transporter with Folding Handle

The EDMO JSTF has all the features and same functionality as the EDMO JST, with added handle height for further leverage. The JSTF is recommended for larger and heavier Jack Stand models, or where the Jack Stands will be manoeuvred with heavy extensions in place.

The JSTF is compatible with all EDMO Jack Stand models.

Lead Time: 12 weeks from receipt of deposit

EDMO Stand Forklift Attachment

For those situations when it is easier to transport the stand via vehicle, possibly due to rough terrain or distance to travel around the workshop or site.

The fork attachment is fitted to the forklift tines and secured by a chain around the backrest.

The stand socket will then take the spigot on the fork attachment.

Working Load Limit: 1000 Kgs
Weight: 160kgs

Lead time: 12 weeks from receipt of deposit

Additional Information

PLEASE ENQUIRE TO WORK WITH OUR ENGINEERS TO CREATE CUSTOM LOAD CAPS, EXTENSIONS, ENGAGEMENTS AND ACCESSORIES TO SUIT YOUR SPECIFIC REQUIREMENTS.

LOAD CAPS AND EXTENSIONS ARE TO BE USED UNDER AN ADVISORY STANDARDS CODE OF PRACTICE, IN CONJUNCTION WITH SITE SAFE OPERATING PROCEDURES/RISK ASSESSMENT.

Packed on half pallet for Australian market and on skid for exportation. For more packing options, long distance and export requirements, please enquire.